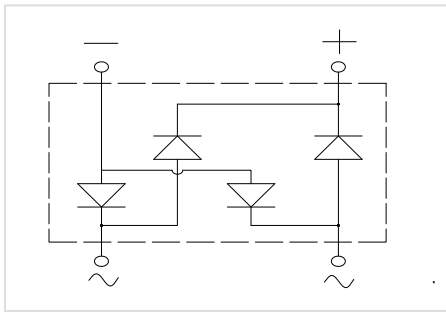
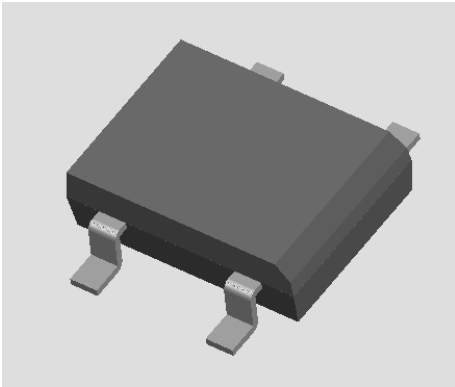


Bridge Rectifiers



Features

- UL recognition, file #E313149
- Glass passivated chip junction
- Ideal for automated placement
- High surge current capability
- Meets MSL level 1, per J-STD-020, LF maximum peak of 260 °C

Typical Applications

General purpose use in AC/DC bridge full wave rectification for SMPS, lighting ballast, adapter, battery charger, home appliances, office equipment, and telecommunication applications.

Mechanical Data

- Package:** DBS
- Molding compound meets UL 94 V-0 flammability rating, RoHS-compliant, Halogen free
- Terminals:** Tin plated leads, solderable per J-STD-002 and JESD22-B102
- Polarity:** 800

									1000
Maximum RMS Voltage	V _{RMS}	V	35	70	140	280	420	560	700
Maximum DC blocking Voltage	V _{DC}	V	50	100	200	400	600	800	1000
Average rectified output current @60Hz sine wave, R-load, T _c =118	I _O	A	2.0						
Forward Surge Current (Non-repetitive) @60Hz Half-sine wave, 1 cycle, T _j =25	I _{FSM}	A	60						
Forward Surge Current (Non-repetitive) @1ms, square wave, 1 cycle, T _j =25			120						
Current squared time @1ms t 8.3ms T _j =25, Rating of per diode	I ² t	A ² s	14.9						
Storage temperature	T _{stg}		-55 ~ +150						
Junction temperature	T _j		-55 ~ +150						

Electrical Characteristics T_a=25 Unless otherwise specified

PARAMETER	SYMBOL	UNIT	TEST CONDITIONS	DB201S	DB202S	DB203S	DB204S	DB205S	DB206S	DB207S
Maximum instantaneous forward voltage drop per diode	V _F	V	I _{FM} =1.0A	1.0						
Maximum DC reverse current at rated DC blocking voltage per diode	I _R	μA	T _j =25	5						
			T _j =125	100						
Typical junction capacitance	C _j	pF	Measured at 1MHz and Applied Reverse Voltage of 4.0 V.D.C	19						



DB201S THRU DB207S

Thermal Characteristics $T_a=25$ Unless otherwise specified

PARAMETER	SYMBOL	UNIT	DB201S	DB202S	DB203S	DB204S	DB205S	DB206S	DB207S
Typical Thermal Resistance	R J-A	/W	40.0						
	R J-L		15.0						
	R J-C		8.0						

Note: Device mounted on P.C.B with 35mm*25mm*1.7mm

Ordering Information (Example)

PREFERED P/N	PACKING CODE
--------------	--------------



Outline Dimensions

Suggested pad layout

Dim	Min
P1	8.73
P2	5.12
Q1	



Disclaimer

The information presented in this document is for reference only. Yangzhou Yangjie Electronic Technology Co., Ltd. reserves the right to make changes without notice for the specification of t